

AXIS 240Q Video Server

Digital benefits for analog surveillance systems

The AXIS 240Q Video Server transforms traditional analog video into high quality digital images. It connects directly to an Ethernet network, and is a cost-efficient alternative that provides high quality video from analog video sources at 6/5 frames per second per channel.

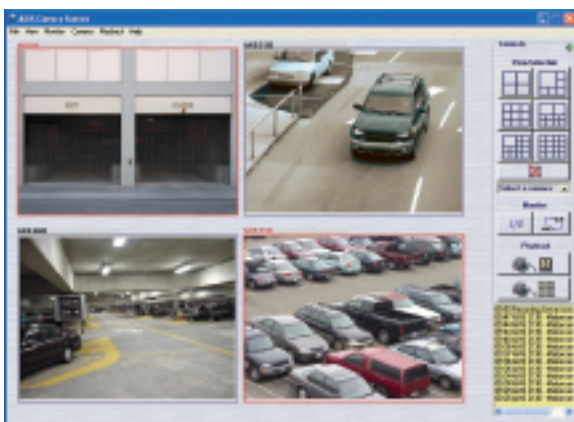
The high-performance AXIS 240Q is designed for professional IP-Surveillance systems, providing video from all cameras simultaneously. It is ideal as an integrated part of a large security system. Network utilization is optimized with functions such as built-in video motion detection and multiple compression levels. Powerful event management based on triggered or scheduled events adds value for the demanding customer.

The AXIS 240Q comes with a strong security package, including HTTPS, IP address filtering and multiple user access levels with password protection. Based on the feature set of the world's most sold video server, the AXIS 240Q also has PTZ functionality, a powerful application programming interface, and is compatible with all major software applications.

Axis video servers represent a cost-effective single box solution for transmitting digital video over intranet networks, or the Internet.



- High quality video at 6/5 frames per second per channel
- Built-in Video Motion Detection
- Compatible with all major software applications
- Support for analog PTZ Dome cameras
- HTTPS encryption for network security



AXIS 240Q Video Server



28002JEN/R3/0611

Specifications

Models	Axis 240Q: Four port Video Server Also available as for Video Rack Solution	Processors and memory	CPU: ETRAX 100LX 32bit Video processing and compression: ARTPEC-2 Memory: 32 MB RAM, 8 MB Flash
Video compression	Motion JPEG	Video access from Web browser	Camera live view, sequence tour for up to 20 PTZ presets or external Axis video sources, customizable HTML pages
Resolutions	4CIF, 2CIFExp, 2CIF, CIF, QCIF max 704x480 (NTSC) 704x576 (PAL) min 160x120 (NTSC) 176x144 (PAL)	Minimum Web browsing requirements	Pentium III CPU 500 MHz or higher, or equivalent AMD, 128 MB RAM, AGP graphics card 32 MB RAM, Direct Draw Windows XP, 2000, DirectX 9.0 or later Internet Explorer 6.x or later For other operating systems and browsers see www.axis.com/techsup
Frame rate (NTSC/PAL)	Up to 6/5 fps per channel	System integration support	Open API for application integration, including AXIS VAPIX API*, AXIS Media Control SDK*, event trigger data in video stream Quality of Service (QoS) Layer 3, DiffServ Model Watchdog ensures continuous operation, event notifications can be monitored by other systems Embedded Linux operating system * Available at www.axis.com
Video streaming	Motion JPEG Controllable frame rate and bandwidth	Supported protocols	IPv4/v6, HTTP, HTTPS, SSL/TLS*, TCP, QoS, SNMPv1/v2c/v3 (MIB-II), RTP, RTSP, UDP, IGMP, RTCP, SMTP, FTP, ICMP DHCP, UPnP, Bonjour, ARP, DNS, DynDNS, SOCKS, IEEE802.1X. More information on protocol usage available at www.axis.com <i>*This product includes software developed by the Open SSL Project for use in the Open SSL Tool kit (www.openssl.org)</i>
Image settings	Compression levels: 11 (Motion JPEG) /23 (MPEG-4) Rotation: 90°, 180°, 270° Aspect ratio correction Color: color, black & white Overlay capabilities: time, date, text, image or privacy mask De-interlace filter	Video management software (not included)	AXIS Camera Station - Surveillance application for viewing, recording and archiving up to 25 cameras See www.axis.com/partner/adp_partners.htm for further software applications via partners
Security	Multiple user access levels with password protection, IP address filtering, HTTPS encryption, IEEE 802.1X authentication.	Included accessories	Power supply 9V DC, mounting brackets, connector kit, Installation Guide, CD with installation tool, software and User's Manual
Alarm and event management	Events triggered by video motion detection, external inputs, audio or according to a schedule Image upload over FTP, email and HTTP Notification over TCP, email, HTTP and external outputs Pre- and post alarm buffer of 3 MB per channel	Accessories (not included)	AXIS 295 Video Surveillance Joystick MPEG-4 Decoder multi-user license pack Cable adapter Y/C to BNC (AXIS 241S/SA)
Pan/Tilt/Zoom	A wide range of analog PTZ dome cameras is supported, free drivers available at www.axis.com 20 presets/camera, Guard tour, PTZ control queue Supports Windows compatible joysticks	Approvals	EN 55022 Class B, EN 61000-3-2, EN 61000-3-3, EN 55024, FCC Part 15 Subpart B Class B, ICES-003 Class B, VCCI Class B, C-tick AS/NZS CISPR 22, EN 60950 Power supply: EN 60950, UL, cUL
Connectors	4 BNC analog composite video (NTSC/PAL autosensing) Ethernet 10BaseT/100BaseTX, RJ-45 Terminal block: 4 alarm inputs, 4 alarm outputs, RS-485/422 half duplex port, alternative power connection D-Sub for RS-232 port	Dimensions (HxWxD) and weight	42 x 140 x 155 mm (1.7" x 5.5" x 6.1") 540 g (1.2 pounds) excluding power supply
Casing	Metal casing. Standalone, stackable or with brackets for wall or cage mount		
Power	7 - 20 V DC, max 8 W		
Operating conditions	5 - 50 °C (41 - 122 °F) Humidity 20 - 80% RH (non condensing)		
Installation, management and maintenance	AXIS Camera Management tool on CD and web-based configuration Configuration of backup and restore Firmware upgrades over HTTP or FTP, firmware available at www.axis.com		



AXIS 240Q Video Server is also available as blade version for AXIS Rack Solution. 12 blade slots allow for centralized video server management.

AIRLINX Communications, Inc.
Box 253
Greenville, NH 03048
E-mail: sales@airlinx.com
Tel: (888) 224-6814
Fax: (603) 878-0530

